

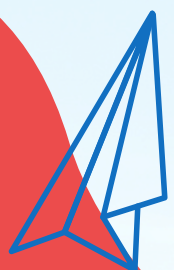
ASPIRE OSHC



VACATION CARE PROGRAM ASPIRE CAMDEN HAVEN

SEPTEMBER / OCTOBER 2025

BOOK NOW



VACATION CARE PROGRAM

ASPIRE CAMDEN HAVEN

SERVICE MANAGER: Nicole Qadir
PHONE: 0438 287 631
EMAIL: camdenhaven@aspire-oshc.com.au

Monday
22/09/2025

School Day



Tuesday
23/09/2025

School Day



Wednesday
24/09/2025

School Day



Thursday
25/09/2025

School Day



Friday
26/09/2025

Minecraft Day Centre Day



Come dressed as your favourite character and let's explore, build, and survive in a blocky world together

- Location: Camden Haven Aspire OSHC
- Vacancies: 45
- Activity Starts: 10am
- Activity Ends: 3pm

\$95



VACATION CARE PROGRAM

ASPIRE CAMDEN HAVEN

SERVICE MANAGER: Nicole Qadir
PHONE: 0438 287 631
EMAIL: camdenhaven@aspire-oshc.com.au

Monday
29/09/2025

Ninja Warrior Internal Excursion



Who will conquer the challenge and become the ultimate Gecko-Ninja?

Join Gecko sports and channel your inner ninja, take on fun ninja challenges, obstacle courses and awesome warrior games

- Location: Camden Haven Aspire OSHC
- Vacancies: 45
- Activity start: 10am
- Activity end: 11.30am

\$105

Tuesday
30/09/2025

Planet Skate Excursion



Rollerskating isn't just cool – it's an awesome way to hang out with your friends, learn new tricks, and challenge yourself to do things you never thought possible

- Location: Planet skate, Port Macquarie
- Vacancies: 45
- Leaving centre: 10:15am
- Return to centre: 1:30pm

\$115

Wednesday
01/10/2025

Sensory Day Internal Excursion



Lay back and relax, watch a movie with your own headset or relax in beach tents with cushions for comfort and enjoy some fun with sensory gadgets.

- Location: Camden Haven Aspire OSHC
- Vacancies: 45
- Activity start: 10am
- Activity end: 3pm

\$95

Thursday
02/10/2025

Inflatable World Excursion



Dive into the world of inflatable fun. Release some energy, share some laughter and make some joyful memories with friends

- Location: Inflatable World Taree
- Vacancies: 45
- Leaving centre: 9am
- Return to centre: 1pm

\$115

Friday
03/10/2025

Hammer Barn Centre Day



Join us at our very own DIY Bunnings workshop. Today the children will make fun creative projects from gardening, woodworking, to mosaics

- Location: Camden Haven Aspire OSHC
- Vacancies: 45
- Activity start: 10am
- Activity end: 3pm

\$85



VACATION CARE PROGRAM

ASPIRE CAMDEN HAVEN

SERVICE MANAGER: Nicole Qadir
PHONE: 0438 287 631
EMAIL: camdenhaven@aspire-oshc.com.au

Monday
06/10/2025

Public Holiday



Service Closed

Tuesday
07/10/2025

Funland Arcade Excursion



No matter your gaming style, we've got you covered, so brush upon your racing skills and join us for a fun filled day at the arcade!

- Location: Funland, Port Macquarie
- Vacancies: 45
- Leaving centre: 10am
- Return to centre: 1pm

\$115

Wednesday
08/10/2025

Art Attack Internal Excursion



With a visit from the parish painting ladies the children will learn many different painting techniques in this hands-on creative learning experience.

- Location: Camden Haven Aspire OSHC
- Vacancies: 45
- Activity start: 11am
- Activity end: 1pm

\$95

Thursday
09/10/2025

Fun Forts Centre Day



If you can stack it, drape it, or balance it, you can build with it. Boxes, branches, or whatever else you can find — it's all part of the fun

- Location: Camden Haven Aspire OSHC
- Vacancies: 45
- Activity Starts: 10am
- Activity ends: 3pm

\$85

Friday
10/10/2025

Game, Set, Match Excursion



Run by qualified coaches, Children will have the opportunity learn and practice various tennis techniques, through a combination of interactive drills and exciting games

- Location: Laurieton Tennis club
- Vacancies: 45
- Leaving Centre: 10am
- Return to centre: 2pm

\$115

VACATION CARE PROGRAM

ASPIRE CAMDEN HAVEN

SERVICE MANAGER: Nicole Qadir
PHONE: 0438 287 631
EMAIL: camdenhaven@aspire-oshc.com.au

Monday
13/10/2025

One Colour Day Centre Day



By the children's request we are having a one colour day.
Come dressed in one colour
Bring food that is one colour
All activities are one colour.
What colour will you decide?

- Location: Camden Haven Aspire OSHC
- Vacancies: 45
- Activity Start: 10am
- Activity end: 3pm

\$85

Tuesday
14/10/2025

Back to School



Wednesday
15/10/2025

Back to School



Thursday
16/10/2025

Back to School



Friday
17/10/2025

Back to School



IMPORTANT DAILY INFORMATION

WHAT TO BRING EACH DAY



Hat



Morning Tea & Lunch



Water Bottle



Backpack



Enclosed Shoes



Sun Safe Clothing

WHAT WE PROVIDE EACH DAY



Breakfast



Afternoon Tea



Late Snack

DAILY STAFFING RATIOS

All ratios adhere to National Laws & Regulations. Daily ratios will be based off the activity and can range anywhere from 1:5 - 1:15.

VACATION CARE IMPORTANT FAMILY INFORMATION

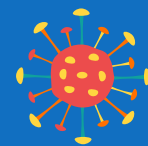


Join our fun filled ASPIRE OSHC Vacation Care program. To make a booking for Vacation Care please 'make a booking' through the [OWNA parent portal](#).



NO HAT NO PLAY

As a sun safe measure ASPIRE OSHC requires all children and staff to wear a Cancer Council approved hat during high UV periods. In addition, and as required by the Cancer Council and WHS legislation we monitor the UV Index daily to ensure we take all reasonable precautions to protect children and staff from over exposure to the sun.



ALLERGY AWARENESS

On enrolment, you are required to advise staff if your child has an allergy and identify the allergy on the enrolment form. To ensure we are able to take best care of your child we ask that you also provide information as to the triggers and symptoms of your child's allergy. All efforts will be made by staff to avoid such triggers. All ASPIRE OSHC services are "Nut Free" environments. Children are not allowed to bring nuts of any type into our services. The sharing of food is also not allowed.



ARRIVALS AND DEPARTURES

You are required to sign your children in and out of the service each day recording arrival and departure time. For safety purposes, it is important that staff are informed of your child's arrival and departure daily.



APPROPRIATE CLOTHING

As a sun safe measure ASPIRE OSHC requires all children and staff to wear a Cancer Council approved hat during high UV periods. In addition, and as required by the Cancer Council and WHS legislation we monitor the UV Index daily to ensure we take all reasonable precautions to protect children and staff from over exposure to the sun.



ANAPHYLAXIS

If your child has a diagnosed allergy, before your child can attend the service you must provide a completed coloured allergy action plan including a coloured photo and labelled medication. All medication should be handed directly to staff on arrival. All medications must be on the premises at all times when your child is present. The action plans are to be updated as required (at least yearly) and staff notified of any changes to the action plan (refer to the anaphylaxis policy and procedure).



MEDICATION

Before we can administer a prescribed medication to your child, we require you to complete a medication authority form. All sections of the medication form need to be completed. Medication can only be administered if the medication is in its original packaging and labelled with the child's name, a current date and the name of the medication and dosage required. (refer to medication policy) Children returning from an illness will require a Doctor's clearance certificate stating they are no longer infectious and are fit to attend care.



SUNSCREEN

Sunscreen is available at the service, we ask that you apply the sunscreen to your child upon arrival. Staff will supervise re-application during the day. If your child is sensitive or has an allergy to the sunscreen we use, please supply an appropriate sunscreen for your child.



ASTHMA

If your child has been diagnosed with Asthma, you must provide a current Asthma action /management plan, which needs to have been completed by your treating GP. In addition we require a long term medication form (refer to the asthma policy and procedure).



PERSONAL BELONGINGS

We recognise that some children may like to bring cherished toys and equipment from home for use during the vacation care program. ASPIRE OSHC cannot take responsibility for lost or damaged items - this includes technology! Tech use can only take place in a designated space at a designated time. These rules will be explained to the children every day before the start of the daily program.

